

## APPENDIX A

### Terminology Related to the Circulatory System

Name: \_\_\_\_\_

Date: \_\_\_\_\_

#### Fill in the Blank

*In the blank at the left, write the word or words from the word bank below that best matches with the definitions provided.*

Word Bank: artery, veins, pulse, diastole, systole, sphygmomanometer, cardiac output, blood pressure, atrioventricular valves, semilunar valves, atria, ventricles

- \_\_\_\_\_ 1. a device used to measure blood pressure.
- \_\_\_\_\_ 2. heart valves that prevent the backflow of blood from the ventricles into the atria.
- \_\_\_\_\_ 3. thin walled chambers of the heart that receive blood from veins.
- \_\_\_\_\_ 4. change in the diameter of the arteries following heart contractions.
- \_\_\_\_\_ 5. blood vessels that carry blood from the body to the heart.
- \_\_\_\_\_ 6. muscular, thick-walled chambers of the heart that deliver blood to the arteries.
- \_\_\_\_\_ 7. valves that prevent the backflow of blood from arteries into the ventricles.
- \_\_\_\_\_ 8. contraction of the heart, during which blood is pushed out of the heart.
- \_\_\_\_\_ 9. the amount of blood pumped from the heart each minute.
- \_\_\_\_\_ 10. a blood vessel that carries blood from the heart to the body.
- \_\_\_\_\_ 11. relaxation (dilation) of the heart, during which the cavities of the heart fill with blood.
- \_\_\_\_\_ 12. the force of the blood on the walls of the arteries.

## Terminology Related to the Respiratory System

Name: \_\_\_\_\_

Date: \_\_\_\_\_

### Fill in the Blank

*In the blank at the left, write the word or words from the word bank below that best matches with the definitions provided.*

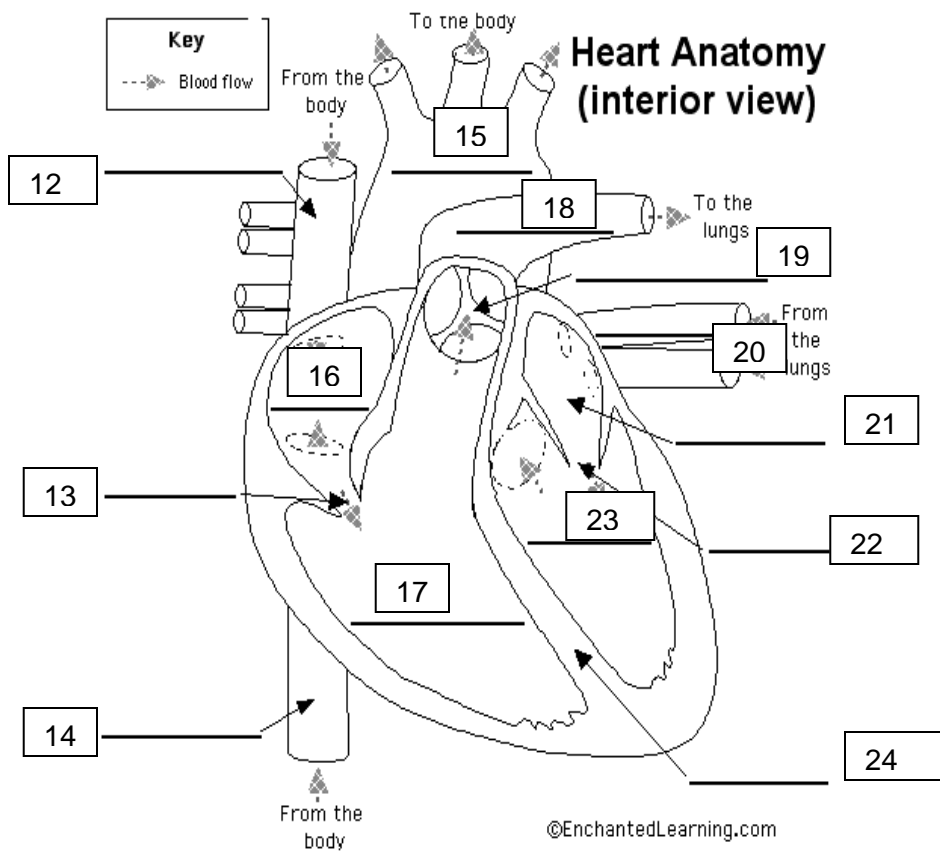
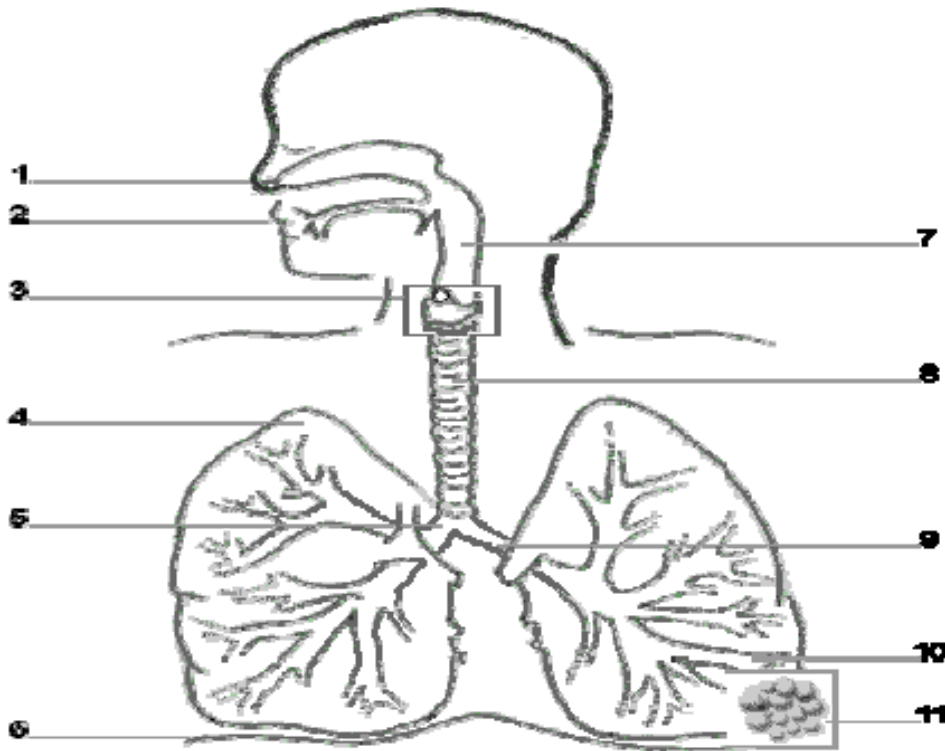
Word Bank: respiration, breathing, trachea, expiration, inspiration, diaphragm, tidal volume, expiratory reserve volume, inspiratory reserve volume, vital capacity, external intercostal muscles, internal intercostal muscles

- \_\_\_\_\_ 1. the movement of gases between the respiratory membrane of living things and their external environment.
- \_\_\_\_\_ 2. the windpipe
- \_\_\_\_\_ 3. muscles that pull the rib cage downward, increasing pressure inside the chest cavity.
- \_\_\_\_\_ 4. the amount of air inhaled and exhaled in a normal breath.
- \_\_\_\_\_ 5. the maximum amount of air that can be exhaled.
- \_\_\_\_\_ 6. all processes involved in the exchange of oxygen and carbon dioxide between cells and the environment.
- \_\_\_\_\_ 7. process where diaphragm contracts, or shortens, and chest volume increases and pressure in lungs decreases.
- \_\_\_\_\_ 8. the amount of air that can be forcibly exhaled after a normal exhalation.
- \_\_\_\_\_ 9. a sheet of muscle that separates the organs of the chest cavity from those of the abdominal cavity.
- \_\_\_\_\_ 10. process where diaphragm relaxes and the chest volume decreases and the pressure in the lungs increases.
- \_\_\_\_\_ 11. muscles that raise the rib cage, decreasing pressure inside the chest cavity.
- \_\_\_\_\_ 12. the amount of air that can be forcibly inhaled after a normal inhalation.

Name: \_\_\_\_\_

Date: \_\_\_\_\_

Label the following diagrams:



Circulatory and Respiratory Systems Review Sheet

Name: \_\_\_\_\_

Date: \_\_\_\_\_

Use the information from your textbook to complete the following:

Circulatory System – Read Chapter 7 pp.250-268

Understanding Concepts pp. 278

1. #1 (C, K)
2. #8 (C, A)
3. #10 (C, A)
4. #20 (C, I)
5. #23 (C, I)

Respiratory System – Read Chapter 8 pp.280-289

Understanding Concepts pp. 318

1. #2 (C, K)
2. #7 (C, K)
3. #8 (C, K)
4. #14 (C, I)
5. #15 (C, I)

Formative Assessment Criteria

C – Spelling, grammar, sentence structure	4	3	2	1	R
K – Use of correct terminology	4	3	2	1	R
A – Application of knowledge to a related question	4	3	2	1	R
I - Inquiry skills	4	3	2	1	R